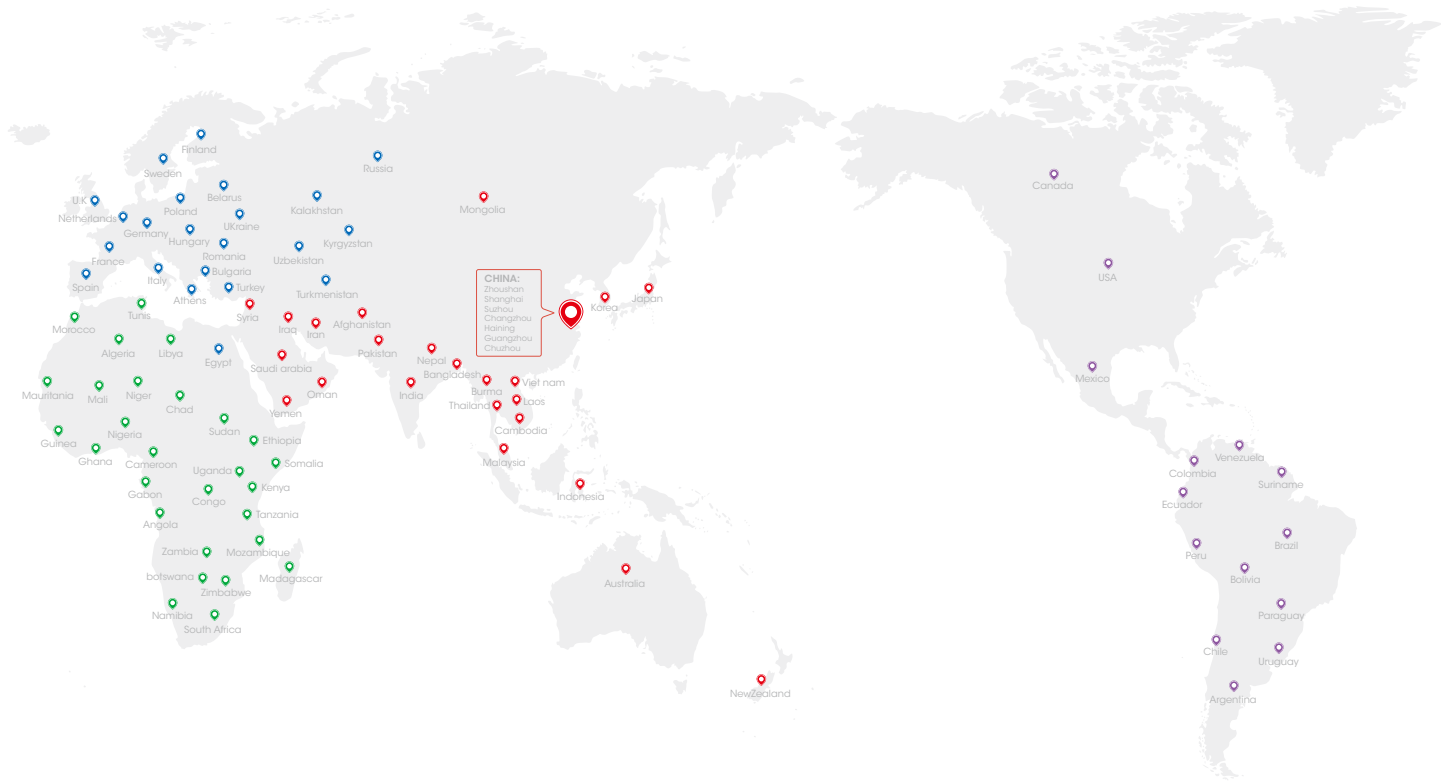


www.jwell.cn

品质卓越 完美如一



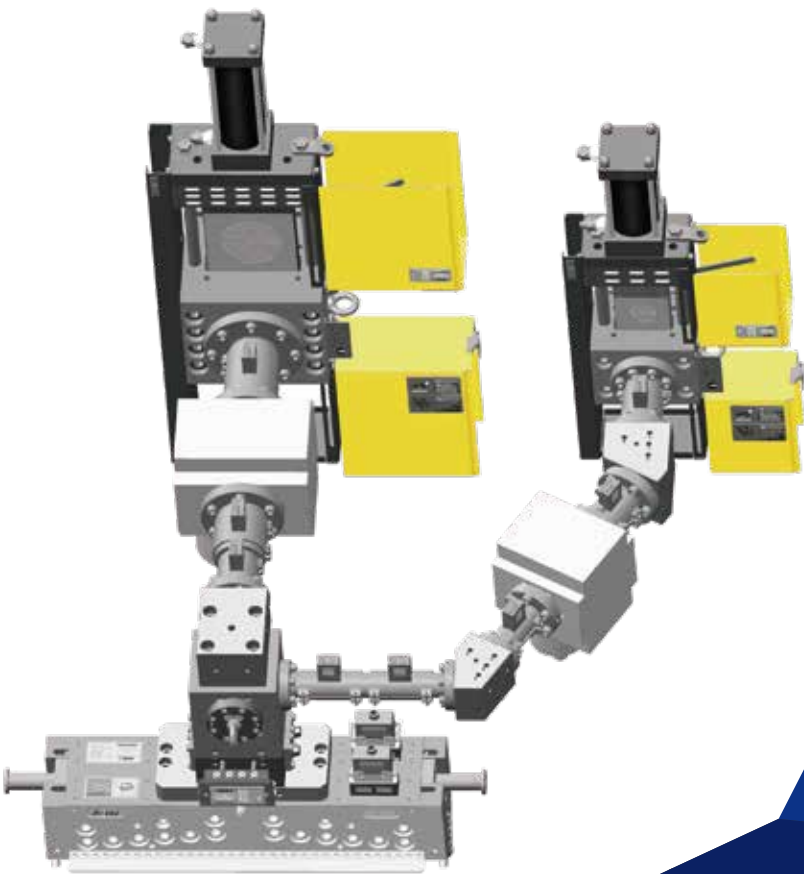
POLYMER FILTRATION SYSTEM

聚合物过滤系统

Suzhou Jwell Precision Machinery Co.,Ltd.

苏州杰威尔精密机械有限公司

www.jwell.cn



JWELL
info@jwell.cn
sales@jwell.cn

JWELL



JWELL

JWELL

Melt Pipe Series

流道系列

完美连接换网器和挤出模头

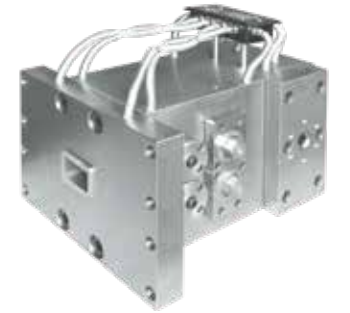
The ideal connection between screen changers and extrusion die

定制化可能性

Customization capabilities

品质保证流道系统

Quality melt pipe system



过去，我们设计制造的流道系统都是根据客户要求定制的,但如今越来越多的制品厂家能够接受使用换网器来过滤聚合物中杂质对于最终制品质量带来的好处。

Adding melt pipes, elbows and adapters to our screen changers, at the beginning it was very much customized product but now as the concepts of using screen changers to separate out contamination has become common necessity.

尤其是在食品包装行业，5-10台挤出机共挤是非常常见的，这需要很多流道来连接挤出机，换网器，计量泵，及平模头。杰伟的工程师利用3D的CAD效果图来建立单个项目的三维效果图，确保在流道加工过程中，和挤出机配套厂家的接口尺寸能完美结合。

In particular, for food packaging 5-10 extruders connected between each other with screen changers and die heads is often and complex. Our engineers use the 3D CAD-CAM to virtualize the project portfolio. In this way we can provide manufacturers of extrusion lines a turnkey product of the highest quality.

杰伟提供流道尺寸从 $\phi 24$ mm到 $\phi 120$ mm。我们的常用转角法兰从30°，45°，60°到90°不等，通常为一机一出，但是一机双出或其他规格我们同样可以提供。

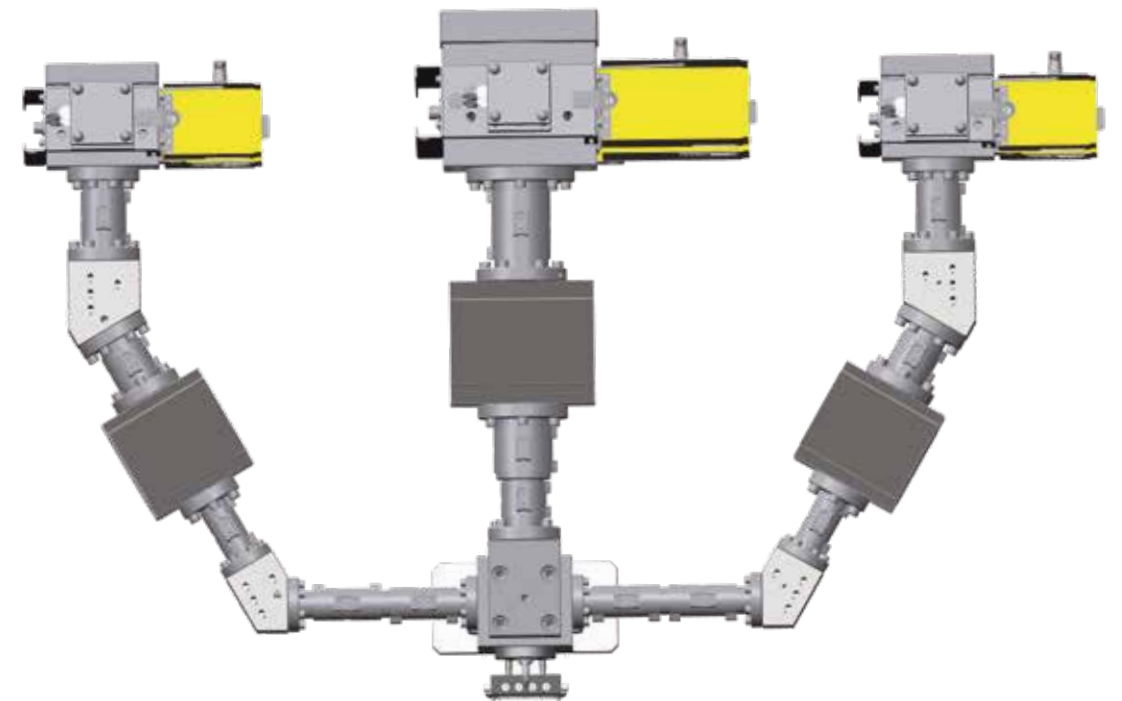
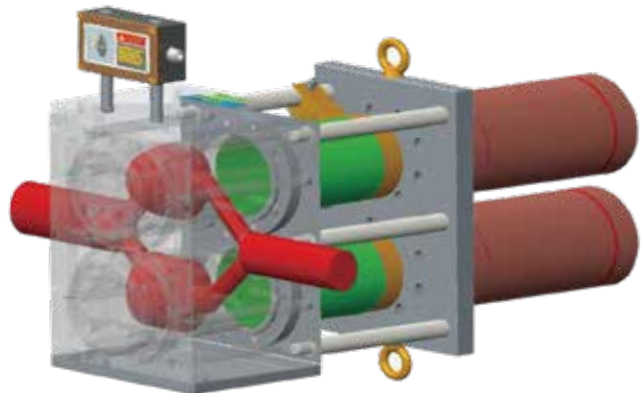
Our range starts from 24 mm up to 120 mm. for high production rates. The 30° , 45° , 60° and 90° ellbows in monobloc, as well as in two halves, allow to satisfy the most varied requirements.

如今的塑料制品生产对质量与外观都有很高的要求。塑料生产与加工的一项重要工作就是过滤，在挤出机和平模头之间增加过滤系统可去除加热后工程塑料中所含的污染物。

杰伟提供的塑料制造与加工过滤系统主要分为换网器系列，液压站系列，及流道配合系统，广泛应用与各类塑料制品挤出、回收造粒等领域。通过不断开发创新改进过滤设备，和高标准产品制造让产品的性能值得信赖，并提供多种可选择的结构形式和规格型号满足消费者期望，实现客户的各种过滤要求。

Nowadays, high standards are expected of any polymer products both in terms of manufacturing quality and visual appeal. One key aspect of the production and processing of plastics is therefore the filtration stage, by adding filtration system between the extruder and flat dies helps to separate out contamination from the melted engineering thermoplastic.

JWELL supplies the equipment needed for filtration in all areas of plastics manufacturing and recycling process. To that end, the company keeps developing and launching new products in three distinct areas: Screen Changers , Hydraulic Station and Melt Pipes. Constantly-running development processes improve these filtration units, with variety ranges of filtration product and high production standard, it ensures that the quality meets our consumers' expectations.





Continuous flow screen changers

连续式换网器

JW-DB single panel double station screen changer

JW-DB单板双工位液压换网器

- 采用新型的压力密封技术，用于很高压力的挤出环境，达到最佳密封效果且换网更迅速。
The new sealing system allows its use also on extrusion lines working with very high pressure levels.
- 交替式工作模式，能保证在换网过程中的料流连续、稳定以及工艺参数的可重复性。
Continuity working ability makes sure the polymer flowing is constant, stable and specification repeatable during the filtration chamber change.
- 板式换网器可交换式零部件简化维护成本及更换时间。
Interchangeable components allow even complex maintenance at the customer site, minimizing downtime and costs.

推荐使用 Suitable Application

- 吹模或流延模 Blown or cast films
- 片材挤出 Flat sheet extrusion
- 管材挤出 Pipes extrusion
- 塑料回收 Recycling
- 色母粒及造粒 Master-batch and compound pelletizing
- 中空 Blow Molding



技术参数 Technical Specification					
规格 Filtering Size(mm)	滤网面积 Filtration Area(mm²)	产量 Throughput(Kg/h)	承载压力 Operating Pressure(Mpa)	加热功率 Heating Power(Kw)	温控分区 Heating zones
Φ 50	1960	50~100	25	4	2
Φ 70	3850	80 ~ 150	25	4	2
Φ 100	7850	150 ~ 350	25	6	3
Φ 120	11300	250 ~ 400	25	6.4	3
Φ 150	17670	350 ~ 600	25	7	3
Φ 180	25440	450 ~ 1000	25	8	3
Φ 200	31415	550 ~ 1300	20	12	3
Φ 250	49087	850 ~ 1700	18	13	3
Φ 300	70685	1100~2000	15	14	3

JW-TB double panel double station screen changer

JW-TB双板双工位液压换网器



技术参数 Technical Specification					
规格 Filtering Size(mm)	滤网面积 Filtration Area(mm²)	产量 Throughput(Kg/h)	承载压力 Operating Pressure(Mpa)	加热功率 Heating Power(Kw)	温控分区 Heating zones
Φ 50	1960 X2	50~100	30	18	4
Φ 70	3850 X2	80 ~ 150	30	18	4
Φ 100	7850 X2	150 ~ 380	25	18	6
Φ 120	11300 X2	350 ~ 700	25	20.4	6
Φ 150	17670 X2	400 ~ 1000	25	22	6
Φ 180	25440 X2	700 ~ 1300	20	27.2	6
Φ 200	31415 X2	850 ~ 1700	18	41.6	6
Φ 250	49087 X2	1100 ~ 2200	16	52	6
Φ 300	70685 X2	1500 ~ 2600	15	72	6



Continuous flow screen changers

连续式换网器

JW-SZ double pistons screen changer

JW-SZ双柱液压换网器

- 无机械密封结构，保证在高压、高温状态下不渗料。有效降低换网阻力，减小液压系统的工作压力。
- No mechanical seal structure, which can guarantee the high pressure and high temperature condition not seep material.
Effectively reduce the change screen resistance, reduce hydraulic system work pressure .
- 整体式工程油缸，使用寿命更长久。
- Integral engineering oil cylinder, a long use life.
- 交替式工作模式，能保证在换网过程中的料流连续稳定以及工艺参数的可重复性。
- Alternating work mode, can guarantee the material flow continuous, stability and the process parameters of repeatability,when change the screen
- 配合行程位置传感器，换网更精确，更可控。
- Cooperate with stroke position sensor, change the screen more accurate, more controllable.

推荐使用 Suitable Application

流动性比较好的聚合物，如PET
Polymer with high liquidity,e.g. PET



技术参数 Technical Specification					
规格 Filtering Size(mm)	滤网面积 Filtration Area(mm²)	产量 Throughput(Kg/h)	承载压力 Operating Pressure(Mpa)	加热功率 Heating Power(Kw)	温控分区 Heating zones
Φ 50	1960 X2	50~150	40	7.5	2
Φ 70	3850 X2	80 ~ 150	40	7.5	2
Φ 100	7850 X2	150 ~ 380	35	9	2
Φ 120	11300 X2	350 ~ 700	30	13.5	2
Φ 150	17670 X2	400 ~ 1000	28	15	2
Φ 180	25440 X2	700 ~ 1500	25	18	2

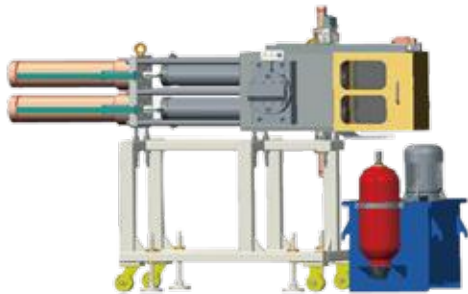
JW- BF Backflush screen changers

JW-BF反冲洗换网器

It is the perfect solution for the direct processing of recycling material into finished products without the intermediate step of pelletizing.
回收物料的直接造粒，不需要中间停留步骤，有效降低了挤出过程中流体剪切。

推荐使用 Suitable Application

PET瓶片,PE,薄膜,管材,纤维
PET flakes, PE, films, pipes,firbers



技术参数 Technical Specification					
规格 Filtering Size(mm)	滤网面积 Filtration Area(mm²)	产量 Throughput(Kg/h)	承载压力 Operating Pressure(Mpa)	加热功率 Heating Power(Kw)	温控分区 Heating zones
Φ 100	7850 X4	200 ~ 600	30	24	2
Φ 120	11300 X4	260 ~ 760	25	29	2
Φ 150	17670 X4	580 ~ 1400	25	31	2
Φ 180	25440 X4	1350 ~ 3000	20	35	2

Hydraulic station series

蓄能式液压站系列

液压作为机电一体化的一部分，能够实现机械自动化，极大地提高劳动生产效率，降低生产成本，越来越多应用于挤出制造回收行业。杰伟的液压站系列产品，具有优良设计和精心制作，保证产品质量的可靠性，同时各类齐全的产品种类和专业配置，总能找到适合您的一款液压站。

Hydraulic station as a part of mechanical and electrical integration, increased production efficiency by achieving full automation with reduce labor cost, it has been used widely in extrusion production and recycle industry. JWELL's hydraulic system ,the perfect design and careful production let the products performance is worth trust; with wide selection of structural from and specifications, always have a suitable for your requirements.

换网器液压站 Screen Changer Hydraulic Station

国产标准配置 Domestic Standard Type

进0高档配置 International Brand Superior Type

三辊液压站 Calendar Hydraulic Station

中空成型机液压站 Blow-Molding Machine Hydraulic Station

破碎机液压站 Crusher and Shredder Hydraulic Station



Discontinuous flow screen changers

非连续式换网器

JW-MT manual screen changer

JW-MT手动换网

- 挤出机螺杆可穿过换网器直接拔出,方便拆卸清理。
Extruder screw directly passing through screen changer easier for cleaning.
- 采用先进的压力密封技术，通过聚合物在网前的压力驱动密封元件，达到最佳密封效果。
With advanced pressure seal technology makes perfect sealing effective.
- 模块化组合，适合不同标准挤出机。
Standardized connecting block helps to adapted with different types of extruders.
- 采用内加热装置，安全节能。
With inner heating elements its safer and energy saving

推荐使用 Suitable Application

吹模 Blow-film

小产量片材 Small size sheet extruder

试验机 Laboratory usage



技术参数 Technical Specification					
规格 Filtering Size(mm)	滤网面积 Filtration Area(mm²)	产量 Throughput(Kg/h)	承载压力 Operating Pressure(Mpa)	加热功率 Heating Power(Kw)	温控分区 Heating zones
Φ 50	1960	50~100	20	3.3	2
Φ 70	3850	80 ~ 150	20	3.3	2
Φ 100	7850	150 ~ 350	15	6.0	2

JW-DZ single piston screen changer

JW-DZ单柱液压换网器

- 无机械密封结构，保证在高压、高温状态下不渗料。有效降低换网阻力，减小液压系统的工作压力。
Non mechanical seal structure to ensure no material ooze during high pressure and high temperature. High efficiency to reduce resistance of screen changing and decrease the hydraulicsystem working pressure.
- 一体式结构，无承载缝隙，强化承载压力，使系统承载压力更高。
Whole body type without gap of bearing to bear high pressure.
- 优质合金钢经氮化处理，大幅延长产品使用周期。
Nitrated Alloy Steel extends the lifetime .
- 经过流变优化后的蜂窝板，有效降低了挤出过程中流体剪切。
Cellular board after flowing simulation reduces the Fluid shear during extrusion process

推荐使用 Suitable Application

流动性比较好的聚合物，如PET

Polymer with high liquidity,e.g. PET



技术参数 Technical Specification					
规格 Filtering Size(mm)	滤网面积 Filtration Area(mm²)	产量 Throughput(Kg/h)	承载压力 Operating Pressure(Mpa)	加热功率 Heating Power(Kw)	温控分区 Heating zones
Φ 50	1960	50~100	30	2.4	2
Φ 70	3850	80 ~ 150	30	2.4	2
Φ 100	7850	150 ~ 350	30	3.4	2
Φ 120	11300	250 ~ 400	25	6	2
Φ 150	17670	350 ~ 600	25	8	2
Φ 180	25440	450 ~ 1000	25	14.4	2
Φ 200	31415	550 ~ 1300	25	18	2