



**ZHEJIANG JWELL
PRECISION MACHINERY**
浙江杰伟精密机械有限公司



JWELL
info@jwell.cn
sales@jwell.cn



A Global Supplier of Solutions on Extrusion Technology
金纬机械—全球挤出技术解决方案供应商

10+ 驻海外办事处
Overseas offices
580+ 技术研发&工程师
R&D Engineer
3,000+ 金纬机械员工人数
Jwell Employee
8+ 个制造基地
Manufacture Bases
500+ 独家专利技术
Patents
1,000,000m²+ 工厂面积 Plant Area



80年代初

金海螺第一代螺杆研制成功
In the early 1980s, the first generation screw of JINHAILUO was successfully developed

1997

上海金纬机械
Shanghai JWELL Machinery

2008

苏州金纬机械
Suzhou JWELL Machinery

2012

常州金纬机械
Changzhou JWELL Machinery

2018

贝克威尔（泰国）
Bkwell (Thailand)

2019

浙江金纬智能装备
Zhejiang JWELL Machinery

2020

金纬公司业绩突破50亿人民币
Jwell's annual sales exceeded CNY 5 billion

2021

滁州金纬机械
Chuzhou JWELL Machinery

2024

连续13年荣获中国塑料机械挤出行业排名首位
Ranked first in China's plastic machinery extrusion industry for 13 consecutive years

We Know
Extrusion

浙江杰伟精密机械

Zhejiang JWELL Precision Machinery



浙江杰伟精密机械有限公司是专业的平模头挤出系统制造商。专业生产各种塑料片材、板材、薄膜、涂覆等各种单层或多层共挤模头，以及分配器、熔体计量泵、换网器、镜面辊筒等，我们致力于为塑料产业提供高价值的挤出成型系统；丰富的生产制造经验和持续的技术创新，配以现代化的加工设备，使产品日趋完美，广泛适用于PP、PE、PET、GPPS、HIPS、ABS、PC、PMMA、PVC、EVA、PVB等原料的生产。

公司产品已遍布全国各地，并出口到俄罗斯、印度、韩国、印尼、中东、非洲和南美洲、西班牙、意大利等100多个国家和地区，深受客户好评。

“品质卓越 完美如一”

是金纬公司的质量方针，是全体员工努力的方向。

“诚实待人”

是我们铸就“百年金纬”的核心理念。

Zhejiang JWELL Precision Machinery Co., Ltd. is a professional T-die extrusion manufacturer. Specializing in the manufacturing of different kinds for sheet, plate, film, coating single-layer and multi-layer co-extrusion die series, Various kinds of distributors, melt pumps and hydraulic screen changer, mirror roller etc, we devote ourselves work for plastic producer to provide the most value of the extrusion system; With the abundant manufacturing experience and continuously technical innovation, equipped with modern CNC processing machines, our company is making the products more perfect. Our products widely used in PP, PE, PET, GPPS, HIPS, ABS, PC, PMMA, PVC, EVA, PVB etc raw material production.

JWELL machinery has been sold across the country, and exported to all continents over the world, including the market of developed country, such as Germany, America, Japan, Spain and so on.

"Excellent Quality, Perfect All" is Jwell's quality policy, and all staff's working direction.

"Be honest" is the core idea for us to contribute "Century JWELL"

董事长：何海潮 Email: he@jwell.cn

President: He Haichao Mobile: +86 13601628188

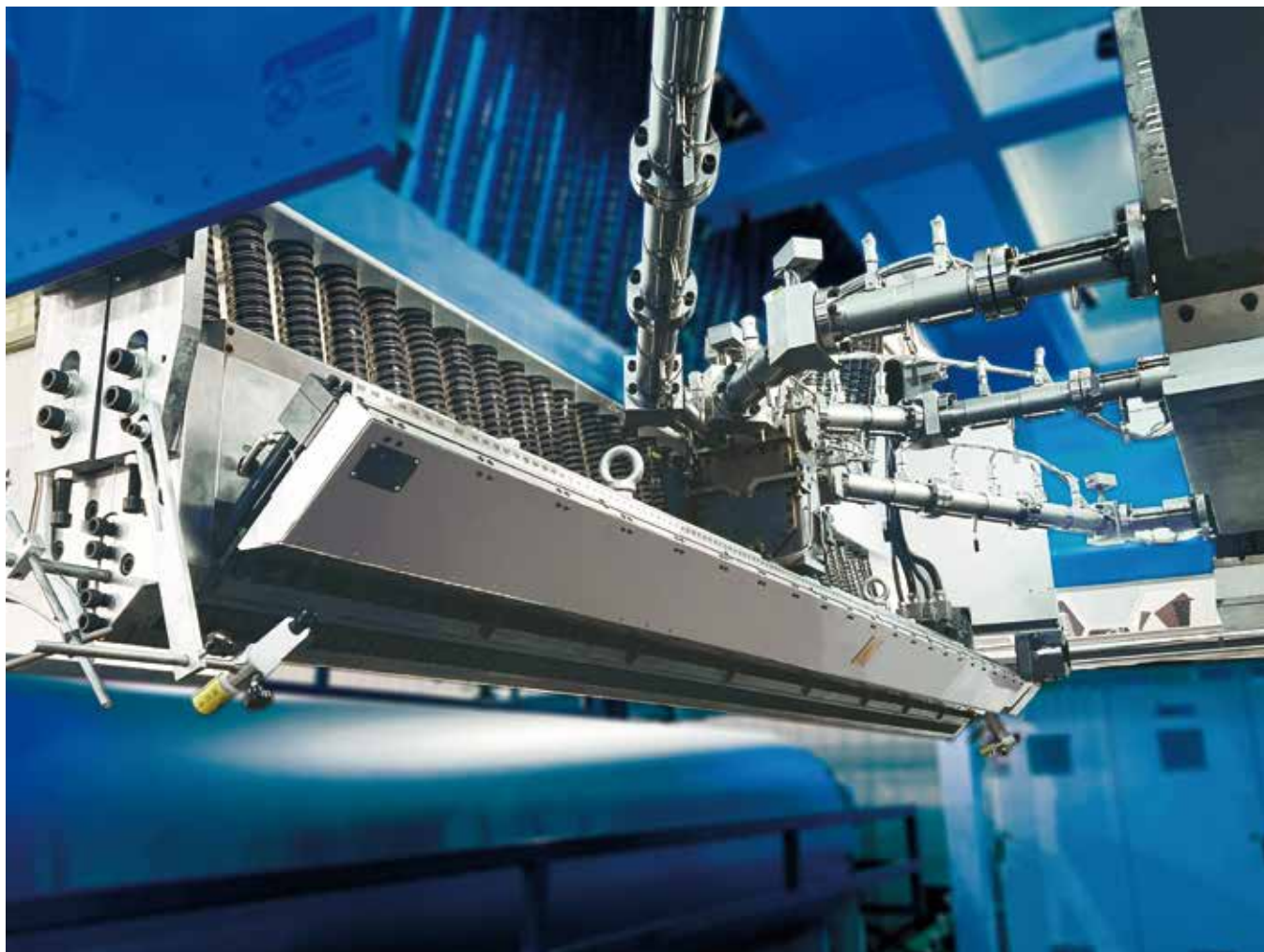
Film Die Series

薄膜模头系列

Zhejiang
Jwell Precision Machinery
www.jwellhn.cn

6000mm CPP/CPE 流延膜模具系列

- ◎ 型腔结构按客户提供的原料定制设计。
- ◎ 流延膜模具采用了加长v形歧管流道，三角形分流技术以及特殊的稳流结构。有效减少了挤出过程中"M"或"W"形料流产生。
- ◎ 模具配备自动调节系统，在生产过程中，通过膨胀螺栓实时自动微调，经测厚仪自动横向往复检测反馈数据，快速调节制品精度。
- ◎ 复合型共挤分配器可实现多层的共挤加工，通过更换分配芯棒可灵活实现不同层结构的转换。
- ◎ 浙江杰伟精密机械6000mm流延膜模具采用了优质2738模具钢。



6000mm CPP/CPE Casting Film Mold Series

- ◎ The cavity structure is customized according to the raw materials provided by the customer.
- ◎ This die adopts extended v-shaped manifold flow channel, triangular split flow technology and special steady flow structure. Effectively reduce the "M" or "W" shape flow during the extrusion process.
- ◎ Easy to connect with existing equipment. The mold is equipped with an automatic adjustment system. During the production process, the expansion bolts are automatically fine-tuned at the same time, and the feedback data is automatically reciprocated by the thickness measurement equipment to quickly adjust the product accuracy.
- ◎ The composite co-extrusion distributor can realize multi-layer co-extrusion processing, and can flexibly realize the conversion of different layer structures by changing the distribution mandrel.
- ◎ Zhejiang JWELL Precision Machinery Co., Ltd. 6000mm casting film mold uses high-quality 2738 mold steel.



EVA/POE Plastic Film Mold Series

EVA/POE胶膜模具系列

Zhejiang
Jwell Precision Machinery
www.jwellhn.cn

3050mm EVA/POE胶膜模具系列

浙江杰伟3050mmEVA/POE胶膜模具采用了优质模具钢材2738，模具表面处理采用了镀硬铬处理技术。铬层厚0.03-0.05mm光伏模头性能对胶膜品质起到决定性的因素。

光伏模头性能对胶膜品质起到决定性的因素，优质的EVA或POE胶膜。具备良好的透光率、高阻隔率、抗冲击强度、以及优秀的光学性能及化学稳定性。

杰伟EVA、POE光伏模头,针对低温高压材料挤出,有效解决了太阳能胶片容易发生材料的交联、分解固化等现象。节约了生产成本与能源消耗，帮助客户实现大产量，交期短，质量高的EVA/POE胶膜制品。

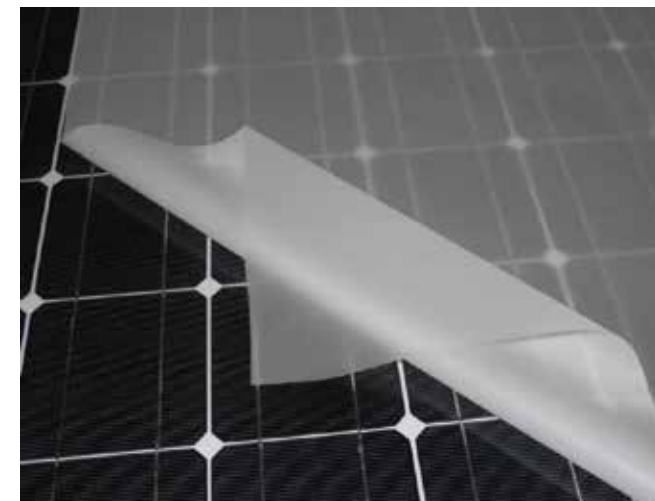


3050mm EVA/POE Plastic Film Mold Series

The Zhejiang Jwell 3050mm EPE adhesive film die is made of high-quality 2738 die steel, and the die's surface is treated with hard chromium plating technology. With a chromium layer thickness of 0.03-0.05mm, the performance of the photovoltaic die head plays a decisive role in the quality of the adhesive film.

The performance of the photovoltaic die is a decisive factor for the quality of the adhesive film. High-quality EVA or POE adhesive film has good light transmittance, high anode barrier rate, impact strength, and excellent optical properties and chemical stability.

JWELL EVA, The POE photovoltaic die head effectively solves the phenomenon of crosslinking, decomposition and curing of solar film customers for the extrusion of low temperature and high pressure materials. It saves production costs and energy consumption, and helps customers achieve high-volume, short-term delivery and high-quality photovoltaic adhesive films.



Prepreg Tape Composite Material Mold Series

预浸带复合材料模具系列

连续纤维增强热塑性复合材料—是以热塑性树脂为基体，连续性纤维为增强材料，经过树脂熔融浸渍、挤压等工艺形成的高强度、高刚性、高韧性、可回收的新型热塑性复合材料。

CFRTP-UD单向带：CFRTP单向带为连续纤维经展开铺平并浸渍热塑性树脂再定型后的单层纤维增强热塑性复合材料片材。其特点是纤维彼此间平行排列(0°方向)，无交织。产品幅宽300-1500mm可根据需求定制。

主要应用:汽车内外饰件、热塑性缠绕管道、体育休闲、家居建材、运输物流、航空航天。

- ◎ 平模头采用衣架结构出料可均匀调节
- ◎ 浸渍模具采用波形结构使熔体浸润充分纤维束分散均匀
- ◎ 型腔流道特殊加硬处理延长使用寿命



CFRTP (Continuous Fiber Reinforced Thermoplastic composites) —based on thermoplastic resin as matrix and continuous fiber as reinforcement material, a new type of thermoplastic composite material with high strength high rigidity, high toughness, and recyclable that is formed through resin melt impregnation, extrusion and other processes.

CFRT unidirectional tape is a single-layered fiber-reinforced thermoplastic composite sheet in which the continuous fibers are unrolled and laid and impregnated with a thermoplastic resin. It is characterized by fibers arranged parallel to each other (0° direction) without interlacing. Product width 300-1500mm, can be customized. automotive interior and exterior trims, thermoplastic winding pipes, sports leisure, home building materials, transportation logistics.

Transportation logistics: floor & inner liners and roof panels of rail vehicles, interior and exterior automotive trim, sleeper carriages, truck compartments, ship decoration panels container liners and roof panels:

- ◎ The flat die adopts the hanger structure, and the material is uniform and adjustable
- ◎ The dipping die adopts a corrugated structure so that the melt is fully infiltrated and the fiber bundles are evenly dispersed
- ◎ Special hardening treatment of cavity runner to prolong service life



Waterproof Sheet Coil Die Series

防水卷材模头系列

Zhejiang
Jwell Precision Machinery
www.jwellhn.cn

9000mm 防水卷材模具

PVC、EVA、PE新型防水材料具有较强的抗渗透性，有良好的防水性能，较高的耐高温、低温性能，有较好的强度及延伸率，并有优异的耐老化性特点。广泛应用于工业与民用建筑的屋面防水、建筑物地下防水、隧道防水、人工湖防水等。

特点:

- ◎ 计算机辅助歧管设计使物料分布均匀，使宽幅制品得以实现。
- ◎ 加长的模唇提高了成品取向的一致性，降低了模头膨胀，对调节的反应灵敏度大大提高。
- ◎ 在模腔中心处歧管与口模结合处所形成的曲线相贯线能够改善物料的侧向流动和分配。
- ◎ 上模唇可微调，下模唇可更换可生产不同厚度制品(1-4mm最大可做到10mm)。
- ◎ 带有节流棒调节功能，能适用不同原料、不同厚度制品的挤出。

9000mm waterproof membrane mold

PVC, EVA, PE new type of waterproof material have high performance of anti-permeability, water-proofness, thermo-stability and cryogenic property, high strength and elongation and have the characteristic of aging resistance, are widely used for waterproof in building roof of industry and civil construction, underground, tunnel, artificial lake, etc.

Characteristics:

- ◎ CAD of manifold making the material distributing uniformly and realize the wide products.
- ◎ The lengthening die lip improved the uniform orientation, reduced the expansion of die, highly improved the reaction of regulating.
- ◎ Line of intersection for curve formed on the joint between the center manifold of die chamber and die lip can improve the flow of side directions and distributing.
- ◎ Micro-adjustable upper die lip and changeable lower die lip for producing different thickness (1-4mm, the maximum is 10mm) .
- ◎ With the function of restrictor bar adjusting and be suitable for the extrusion of different materials and thickness.

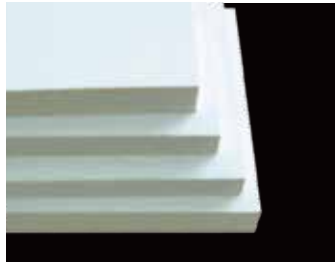


PVC Free Foamed Sheet Die

PVC自由发泡板模具

特殊衣架式流道设计，能最大限度上减少热敏性材料在挤出过程中的烧蚀。采用上模唇可调、下模唇可换及垂直节流棒调节装置，能满足不同厚度制品要求。适用生产PVC自由发泡板材，制品厚度2-20mm。

Special cloth-hanger manifold designing to relieve most ablation during material extrusion process. The up lip adjustable and bottom lip replaceable. Equipped with vertical restrictor bar adjustment and oil temperature control on the die lip to meet different thickness request for production. It is applied for thickness 2-20mm PVC foamed sheet.

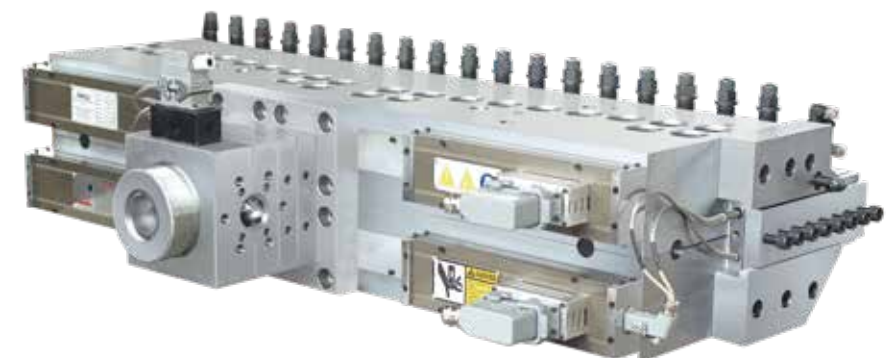


PVC co-extrusion Foamed Die

PVC共挤发泡板模具

特殊衣架式流道设计，能最大限度上减少热敏性材料在挤出过程中的烧蚀。采用最新研发无节流棒、无活动模唇的设计，模口采用推拉式柔性微调。能满足不同厚度制品要求。分配器采用最新研发PVC专用共挤分配器，适用生产PVC结皮发泡板材，制品厚度5-18mm。

Special cloth-hanger manifold designing to relieve most ablation during material extrusion process. Applied with newest non-restrictor bar and without active lip designing. Die lip is applied with push-pull soft fine adjustment to meet different thickness request for production. Feed block used the newest PVC special co-extrusion model for PVC skin foamed board with thickness 5-18mm.



PVC Semi-skinning Foamed Board Die

PVC半结皮发泡板模具

上下模唇与本体采用一体式设计，并在模唇口配置有镶嵌式冷却口模，全流道无缝设计制作。上模唇采用最新针对PVC发泡板模头特殊设计的推位式弹性微调结构，合理的螺丝间距设计确保了调节的灵敏性，同时满足了局部可调模唇出口间隙功能，适应于生产PVC半结皮发泡板材，制品厚度3-25mm。

Up-down die lips and main body are whole body designing, whole manifold without gap designing, and tipped cooling lips equipped on exit of die. Up lip is with specially designed push-pull elastic fine adjustable structure for PVC foam board die, reasonable screw gap designing to ensure precision adjustment. At the same time meeting function of partial adjustable die lip exit gap. It is applied for thickness 3-25mm PVC semi-skinning foamed sheet.

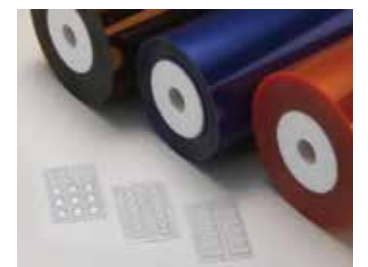


PVC Hard Sheet Mold

PVC硬质片材模具

自主研发板片模头系列，从模头构思设计到精密制造。以高品质的精密挤出满足市场对发泡类及光学级板片材的应用。

Independent study for sheet die series. From concept to precision production. Satisfy the market with high quality precision extrusion of foam and optical level sheet.



Hollow Cross Section Plate Die Series

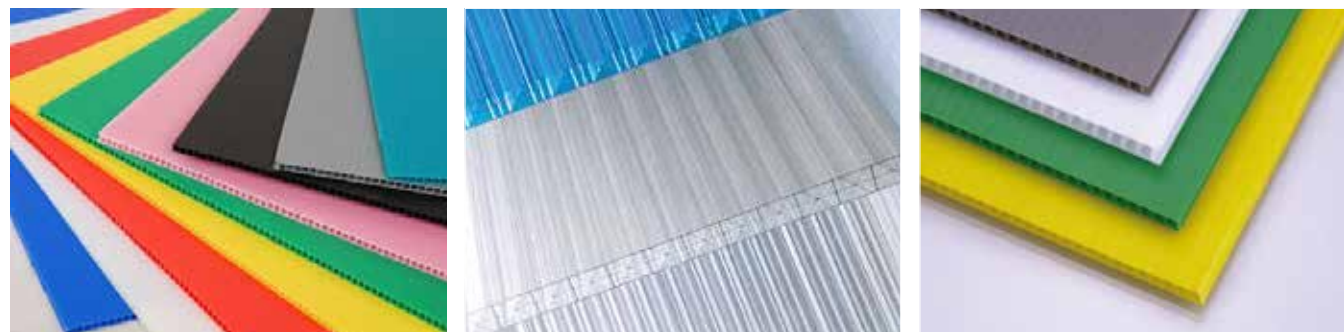
中空格子板模具系列

PC中空阳光板广泛适用于建筑装潢、采光隔热、隔音屏障等领域。中空阳光板模具配有均匀涂覆UV层的分配器，可生产宽度为2100mm的中空制品，其耐候性、抗紫外线、耐冲性、透光率等性能极佳。模具带有上、下弹性微调模唇可调节制品壁厚误差 $\leq 3\%$ 。不同的结构设计适应各种产品要求，通用型阳光板厚度从4-25mm，多层结构板包括H型、X型等结构，厚度可达36mm以上，并可以双面涂覆抗紫外线层。

专用模具生产的PP、PE中空格子板因具有材质轻、强度高、防潮等性能适用于周转箱、灯箱广告、布展材料等方面。制品厚度范围2-12mm，宽度1200-2200mm。

PC hollow plate used widely in constructions and decorations. The hollow grid plate die and feedblock can make UV protection on both sides. The final production with a max width of 2100mm and have a high impact strength, good weather resistance and UV protection. With adjustable upper and lower mold lips, production thickness relative errors can be controlled within 3%. Different design can meet the different requirements of products, general polycarbonate hollow plate whose thickness is between 4-25mm, multi-layers plate such as H-cross section, X-cross section etc, the thickness of some can reach 36mm, and the UV layer can be coated.

The PP, PE hollow grid plate produced by special dies are light weighted, dampproof and have a high impact strength, which is widely used as advertising light panel, exhibition upholster, carry box etc. The thickness-range is 2-12mm and the width is 1200-2200mm.

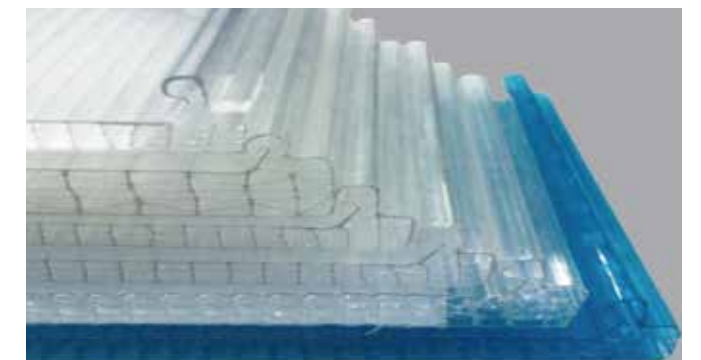
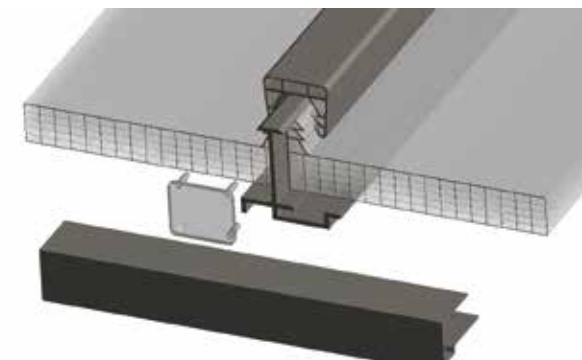


UV Type Lock-catch Sheet

UV锁扣板模具

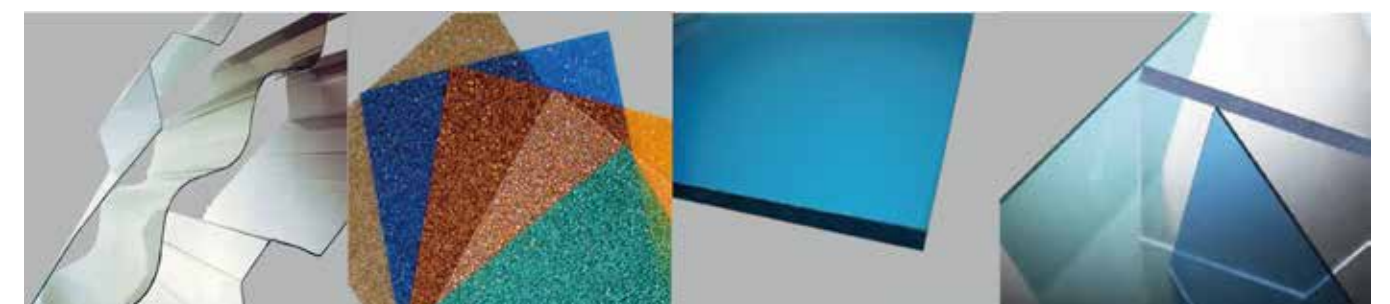
聚碳酸酯U型锁扣板是一种先进的建筑系统，整个系统采用了可自由滑移的固定件，其具有自我紧固系统，无需在板材上钻孔，只需使用聚碳酸酯或铝制连接件即可将板材连接，从根本上解决了普通聚碳酸酯平板在不同使用温度条件下的热胀冷缩问题，直立的肋边设计使整个系统100%杜绝了安装面渗水，并能防灰尘，创新的U型锁边结构设计，使得板材安装变得更简单快捷，结合更牢固，维护更方便。被广泛用于多种采用平面或是弯曲的屋顶和覆层。

PC U Type Lock-catch Sheet is an advanced construction system. It uses free movement connecting components to link in between PC hollow sheet thus prevent shape changing during extreme weather conditions. The vertical lock-catch design ensure 100% water-proof and no dust can go inside. The convenient assembling system helps to increase installation efficiency especially for both flat and curved building roofs.



Die For Pc Solid Sheet

PC实心板



PC 波浪板
PC corrugated sheet

PC 钻石颗粒实心板
PC embossed sheet

PC实心板 (可涂覆UV)
PC solid (UV) sheet

PC LED扩散板
PC diffusion sheet for LED lighting

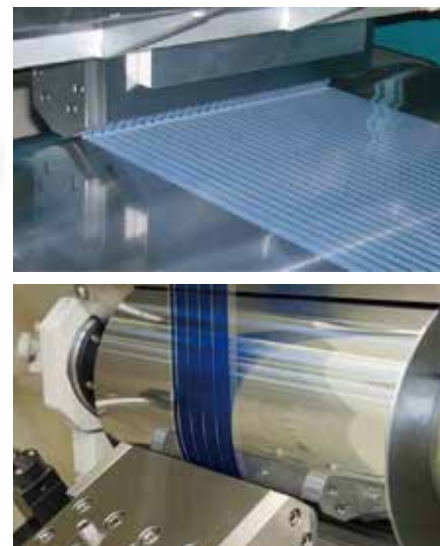
Die Used For Precision Slot Coating Field

精密狭缝涂布领域用模头

狭缝涂布模头应用领域/Applications

狭缝涂布模头可以生产出非常薄的涂层以及透明的光学涂层，同时可使涂层量保持在非常精确公差范围内，与将涂布液擦拭到基材上的涂布系统不同，我们的狭缝涂布模头属于模唇缝隙相对较大（可达到0.0762mm）的涂布模头，由此模唇缝隙抽吸出的液体可形成最薄至1 μ m的涂层。狭缝涂布模头可在涂层厚度只有0.002mm或者是2 μ m的情况下，将整个宽度上的涂层量控制在5%左右的公差变化范围内。我们生产的狭缝涂布模头模唇是固定的，因此可以利用可换的控隙片来改变涂层的厚度和宽度。涂布量从不足1 μ m到254 μ m的涂层厚度，该类模头可加工各种类型的胶粘剂（包括特殊的透明胶粘剂）电池、陶瓷电容器、装饰表面、电子显示介质、过滤膜、地板、燃料电池、磁性泥浆、医疗产品、光阻材料、压敏胶带、太阳能电池、超导体、撕带和窗用薄膜等。

Slot coating die can produce very thin and transparent optical coating layer. Meanwhile it can make the coating weight keep the very accurate tolerance range, it is different with the system which the coating fluid wiped on the base materials, our slot coating die is the die which die lip slot is relatively bigger (it can reach 0.0762mm). The coating fluid layer sucked from this die lip can be as thin as 1 μ m. The slot coating die can control the coating weight tolerance in 5% in the whole width when the coating layer is only 0.002mm or 2 μ m. The slot die lip we manufacture is fixed so that it can control the coating layer thickness and width by using the replaceable shims. The coating layer thickness can be from less than 1 μ m to 254 μ m. This kind of slot die can make different kinds of adhesive (include the special transparent adhesive) battery, ceramic capacitor, decorate surface, Electronic display medium, filtering film, floor board, fuel battery, Magnetic mud, medical product, photoresist, pressure sensitive tape, solar battery, superconductor, tear tape and film which used in the window.



平模头修复升级改造 — 金纬,你的最佳合作伙伴

Extrusion Die Repair Upgraded —JWELL, Your Best Partner

作为挤出平模头专业制造商，我们将为您提供一整套模头清洗、检测、修复、升级、改造等标准服务。

经过JWELL翻新过的模头各项技术指标可以达到或非常接近初始标准。对于非JWELL原产的模头我们同样可以达到该要求。

针对每一套翻新模头我们都将严格按照以下步骤进行:

- | | |
|-----------------------|------------|
| 1、模头拆卸、清理 | 6、修复模体接合面 |
| 2、检查、评估，针对技术翻新要求与客户沟通 | 7、流道进行重新抛光 |
| 3、退除原始镀层 | 8、重新组装模头 |
| 4、修复受损表面或更改缺陷设计 | 9、校对各项技术指标 |
| 5、更换损坏部件 | |

我们为您提供的将是一整套专业流程式作业，服务范围涵盖一般维护到完全翻新。

As China's biggest extrusion equipment manufacturers,we will provide you a whole set standard services with die clean, examination, repair, upgrade, renovate and so on.

Renovates the die each technical specification after JWELL can achieve or very close to the initial standard, we may meet this requirements similarly regarding the non-JWELL production's die.

Every need to repair the die we will strictly according to the following steps:

- 1、The die remove, cleaning
- 2、Inspection, evaluation, and communicate with customer requirements for renovation
- 3、Faded except the original chromium plating
- 4、Repair damaged surface defects or change the defects in design
- 5、Replace damaged parts
- 6、Repairing mold body joints
- 7、The mold flow channel to polish
- 8、Reassemble the die
- 9、Proofreading technical specification

We provide for you will be a whole set specialized flow type work, the range of service covering general maintenance and completely renovated.



品质管理 技术研发
国际交流 客户服务 员工培训

QUALITY CONTROL
TECHNOLOGY RESEARCH
INTERNATIONAL COMMUNICATION
CUSTOMER SERVICE
STAFF TRAINING







24小时服务
24 Hours Service



86-573
87786088
客户服务热线
Customer Service Hotline



培 训
Training



交钥匙工程
Turn-Key Project