

Processing and manufacturing capacity

加工制造能力



辊筒制造能力:

辊筒的最大直径: $\phi 1600\text{mm}$
辊筒的最大长度: 14000mm

辊筒制造最大精度:

同轴度: $\leq 0.005\text{mm}$
圆柱度: $\leq 0.005\text{mm}$
镜面表面粗糙度: $0.005-0.01\text{um}$
最大运行速度 800米/分钟
静平衡校正, 动平衡校正 G2.5 级

辊筒表面处理:

电镀硬铬后超镜面研磨加工
各种橡胶包覆
各种消光、雾面、磨砂、喷涂层等表面

Roller manufacturing capacity:

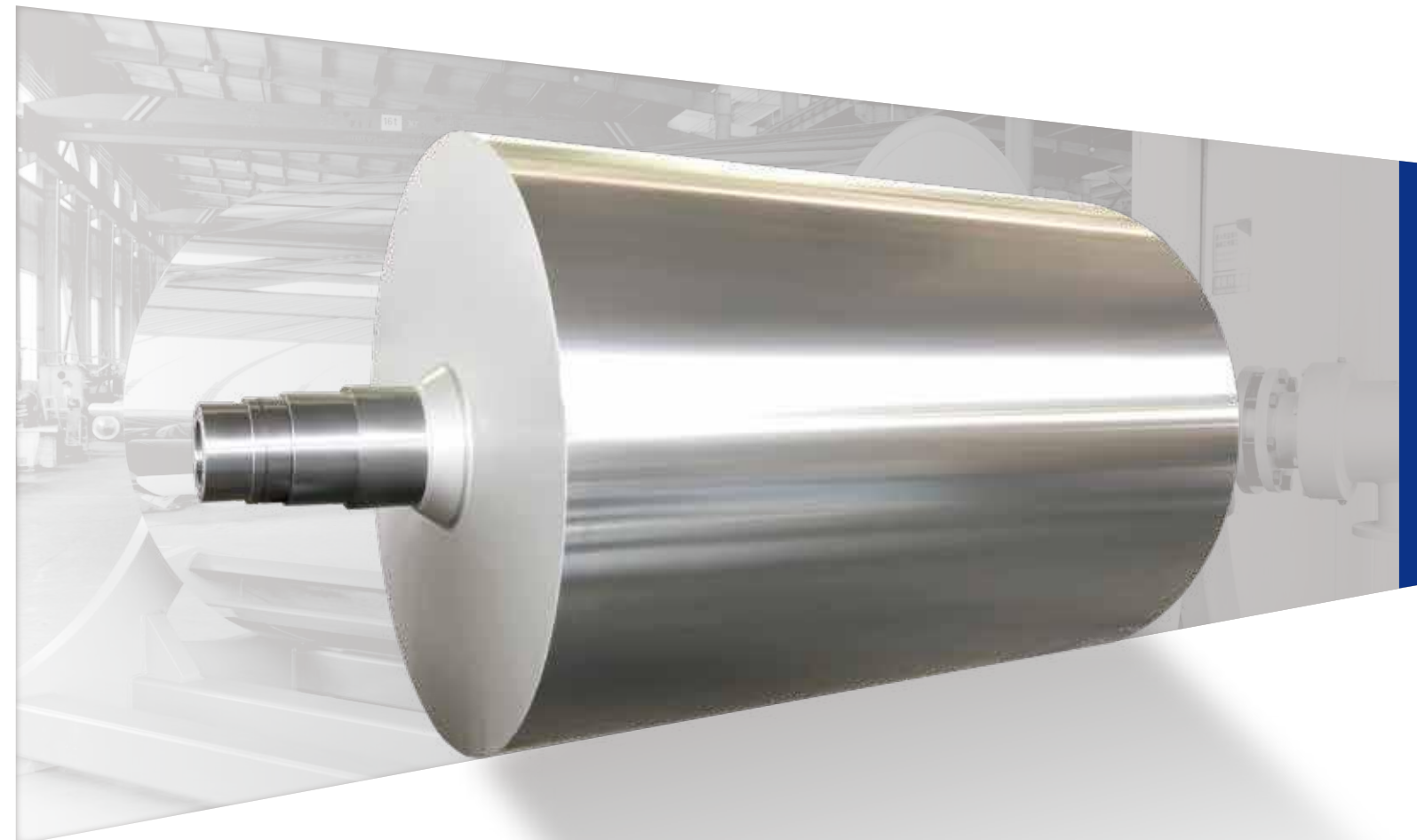
The maximum diameter of the roller: $\phi 1600\text{mm}$
The maximum length of the roller: 14000mm

Roller manufacturing maximum precision:

Coaxiality: $\leq 0.005\text{mm}$
Cylindricity: $\leq 0.005\text{mm}$
Mirror surface roughness: $0.005-0.01\text{um}$ Maximum running speed 800 m/min Static balance correction, dynamic balance correction G2.5 level

Roller surface treatment:

Super mirror grinding process after hard chrome plating
Various rubber coverings
All kinds of matte, foggy, frosted, sprayed coating and other surfaces



辊筒 Roller For Various Sheet And Film

各类片板膜新材

苏州杰威尔精密机械有限公司

SUZHOU JWELL PRECISION MACHINERY CO., LTD.



JWELL

info@jwell.cn
sales@jwell.cn

Super Mirror Roller 超镜面辊筒

应用于光学级塑料片材、板材、薄膜生产设备。生产的制品主要应用于LED面板、电子、电器工业的薄膜开关;电脑、手机液晶显示屏等高端领域。

Production equipment. The products produced are mainly used in high-end fields such as LED panels, thin film switches in the electronics and electrical industries; computers and mobile phone LCD screens.



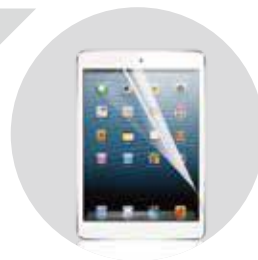
特点:

- ◎ 超镜面辊筒表面光洁度可以达到Ra0.005-0.01 μm ;
- ◎ 辊筒的圆柱度、同轴度均达到 $\leq 0.005\text{mm}$;
- ◎ 温差精度 $\leq \pm 1^\circ\text{C}$
- ◎ 去氢处理工艺
- ◎ 优质45#无缝管、42CrMo合金钢锻件管、Q345D等。

Characteristic:

- ◎ The surface finish of super-mirror roller can reach Ra0.005-0.01 μm ;
- ◎ The cylindricity and coaxiality of the roller both reach $\leq 0.005\text{mm}$;
- ◎ Temperature difference accuracy $\leq \pm 1^\circ\text{C}$
- ◎ Hydrogen removal process
- ◎ High-quality 45# seamless pipe, 42CrMo alloy steel forging pipe, Q345D, etc.

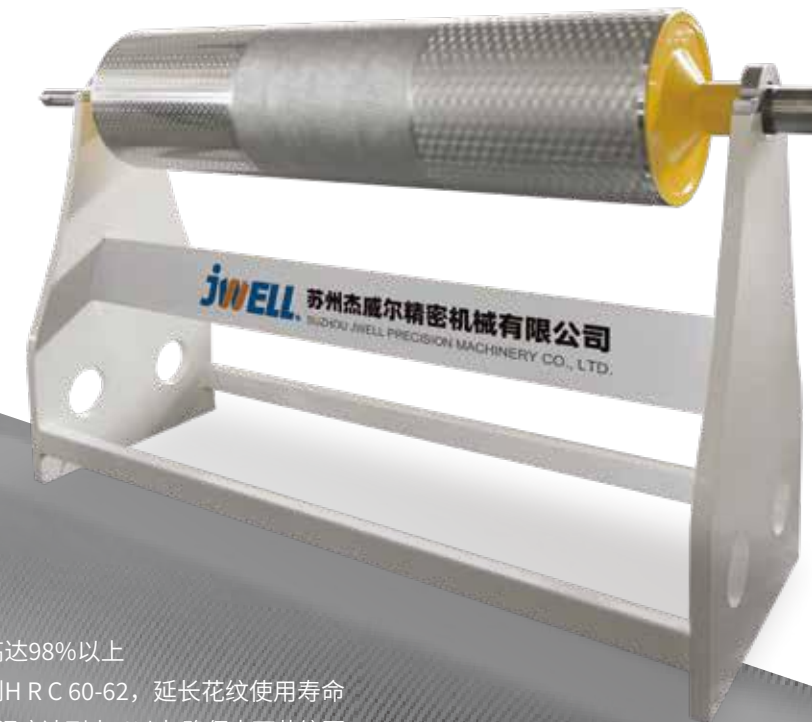
样品



Precision Pattern Roller 精密花纹辊筒

花纹辊用于PET、PP、PMMA等多种塑料片材、板材的表面成型处理。辊面可以加工出各种花纹形式,采用激光电子扫描与分色技术,将客户来样图像转样成高清晰数字影像信息直接录入雕刻机复制出高质量的辊面花纹。辊筒表面可进行喷砂处理,按照目数大小,使辊筒达到消光、雾面、磨砂的效果。制品应用于灯具、装潢、皮革、汽车等多种领域。

Patterned rollers are used for surface molding treatment of various plastic sheets and plates such as PET, PP, and PMMA. The roller surface can be processed into various embossings. Using laser electronic scanning and color separation technology, the customer's sample image is converted into high-definition digital image information, which is directly input into the engraving machine to reproduce high-quality roller surface embossings. The surface of the roller can be sandblasted, according to the size of the mesh, so that the roller can achieve the effect of matting, matte surface and frosting. Products are used in various fields such as lamps, decorations, leather, and automobiles.



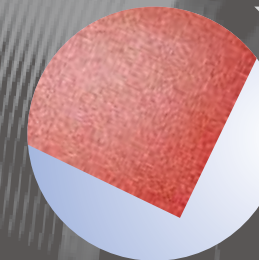
特点:

- ◎ 表面花纹的仿真率高达98%以上
- ◎ 表面电镀层硬度达到HRC 60-62, 延长花纹使用寿命
- ◎ 内部流道设计使辊面温度达到 $\pm 1^\circ\text{C}$ 以内, 确保表面花纹压延成型时均匀一致

Characteristic:

- ◎ The simulation rate of the surface embossing is as high as 98%
- ◎ The hardness of the surface electroplating layer reaches HRC 60-62, prolonging the service life of the embossing
- ◎ The design of the internal flow channel makes the temperature of the roll surface reach within $\pm 1^\circ\text{C}$, ensuring that the surface pattern is uniform during calendaring

样品



Drain Plate, Different Surface Forming Roller 排水板、异面成型辊筒

根据制品不同的用途，采用高精度的数控加工设备对辊筒表面做精密加工，并充分考虑了制品成型中热胀冷缩、排气等特点。使通过异形面成型辊筒连续挤压成型的制品能够完全符合用户的需求。

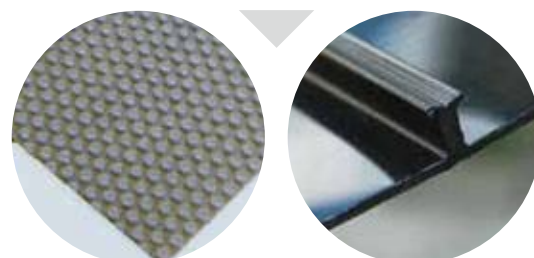
According to the different uses of the products, the surface of the roller is precisely processed by using high-precision numerical control processing equipment, and the characteristics of thermal expansion and contraction, exhaust and other characteristics in the forming of the product are fully considered. The products that are continuously extruded by special-shaped surface forming rollers can fully meet the needs of users.



制品应用于排水板、蜂窝板、止水板、气泡膜、波浪板等多种用途。

Products are used in drainage board, honeycomb board, water stop board, bubble film, wave board and other applications.

样品



Roller For Lithium Battery Separator Film 锂电池隔膜用辊筒

生产锂电池隔膜设备配备的激冷辊、拉伸辊、干燥辊和萃取辊等多种类辊筒,辊筒具有满足该设备的高要求,高精度,保证隔膜生产中的稳定性。

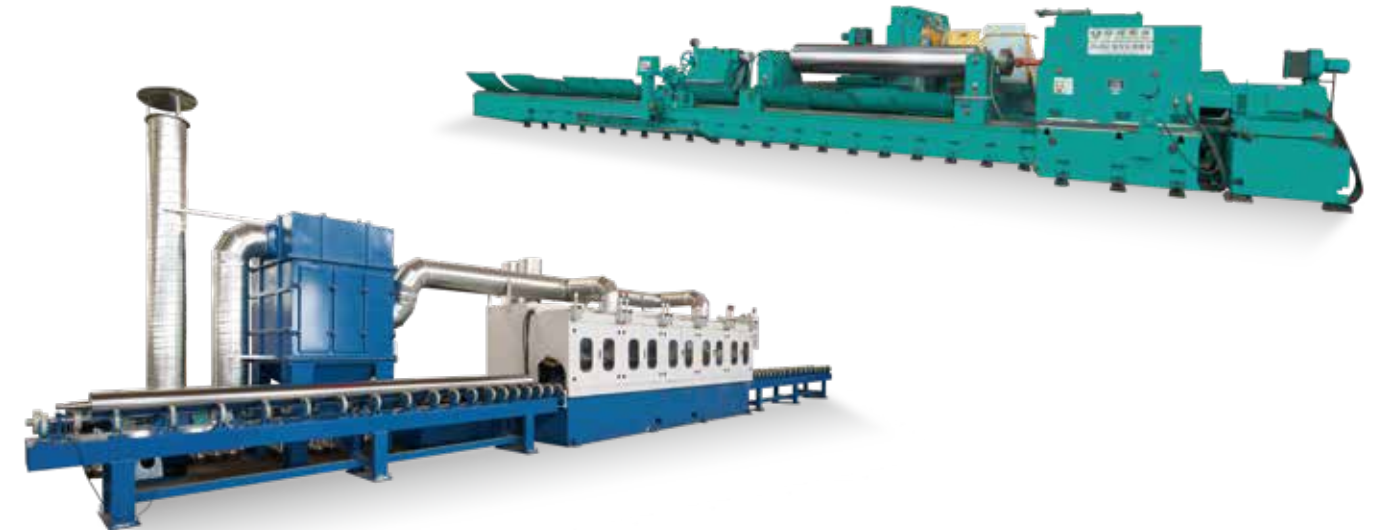
The production of lithium battery diaphragm equipment is equipped with various types of rollers such as chilling rollers, stretching rollers, drying rollers and extraction rollers. The rollers meet the high requirements of the equipment, high precision, and ensure the stability of the diaphragm production.

特点:

辊筒最大宽度: 14 米
辊筒圆柱度、同轴度 $\leq 0.03\text{mm}$
辊筒表面温度误差 $\pm 0.5-1^{\circ}\text{C}$
静平衡校正, 动平衡校正G2. 5级
辊筒材料: S U S304L、S U S316L、Q345D、45#

Characteristic:

Maximum roller width: 14 m
Roller cylindricity and coaxiality $\leq 0.03\text{mm}$
Roller surface temperature error $\pm 0.5-1^{\circ}\text{C}$
Static balance correction, dynamic balance correction G2. 5 level
Roller material: S U S304L, S U S316L, Q345D, 45#



对于各种要求的辊筒我们可提供以下验证:

- ◎ 轴和外套材质;
- ◎ 尺寸与几何报告;
- ◎ 光洁度检测报告;
- ◎ 镀层硬度与厚度报告;
- ◎ 最高达G2. 5级的平衡报告;
- ◎ 重量, 惯性, 在极值速度, 自重情况下的挠度;
- ◎ 防止渗漏的静态压力试验;
- ◎ 辊面温度差异检验;
- ◎ 冷却水流量, 进出水压差异检验。

For rollers with various requirements we can provide the following certifications:

- ◎ Shaft and jacket material;
- ◎ Size and geometry report;
- ◎ Degree of finish test report;
- ◎ Coating hardness and thickness report;
- ◎ Up to G2.5 level balance report;
- ◎ Weight, inertia, deflection at extreme speed and self-weight;
- ◎ Static pressure test to prevent leakage;
- ◎ Roll surface temperature difference test;
- ◎ Cooling water flow rate, inlet and outlet water pressure difference inspection